

Naltex™
Diamond Netting



Naltex™ Diamond Netting

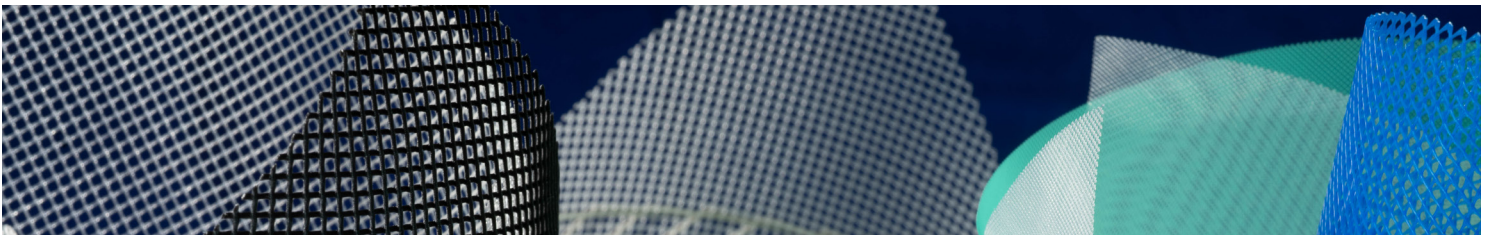
SWM International - Your Essential Material Partner

Naltex™ Diamond Netting is an extruded, diamond, bi-planar mesh netting with bonded strand intersections, widely utilized in many industries. For filtration, it is used as a membrane feed spacer, filter pleat support and for cartridge sleeving. Specialized grades of Naltex Netting serve as wound care components in the medical industry. Many industrial applications benefit from the diverse customization options. Naltex Diamond Netting can also be used for packaging, containment, construction and parts protection.

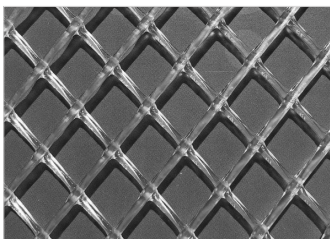
Naltex Diamond Netting variations include:

- Extruded Cage & Sleeves
- Extruded Diamond Netting
- Feed Spacer
- Flow Media
- Parts Protection Netting

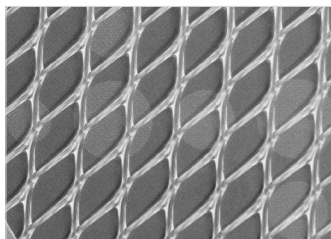
Learn more about **essential solutions** for your applications at swmintl.com or contact us at ams@swmintl.com.



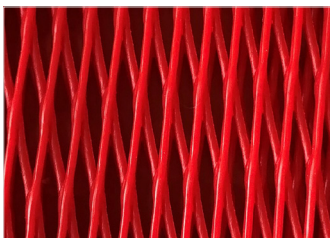
Product Sampling



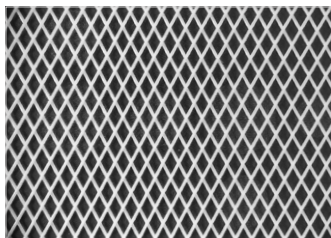
N13503_80PP



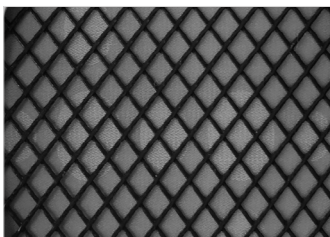
N04506_45PP



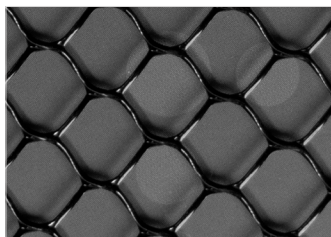
N(01.5)065_LDPE Red



N02015_60PPS



N03009_90EVA Black



N04004_73PA Black

Customization Options

Specifications	Imperial	Metric
Thickness	0.006" - 0.200"	0.15 - 5.08 mm
Width	Up to 102"	Up to 260 cm
Hole Size	Up to 100+ microns	Up to 4+ mils
Strand Density	Up to 100/in	Up to 250/cm
Cage & Sleeve Diameter	1/4" - 24"	6.3 - 610 mm
Resins	Polypropylene - FDA, Gamma Stable, Polyphenylene Sulfide, Nylon, Nylon6,6, Polyester, Hytrel, LDPE, HDPE, PVDF, EVA	
Product Certifications	FDA, NSF, USP Class VI, CFR 21, USDA	
Optional Custom Services	Cutting, slitting, sheeting, laminating, ultrasonic welding, slabbing, die-cutting, calendaring, tantric charging, corono treatment, orientation, heat-sealing, button-sealing, rewinding, custom packaging	
Colors	Natural, red, black, yellow, orange, blue, brown, gray, green, custom	



Agriculture and Aquaculture

Netting for crop and animal protection, fencing, turf netting, hay bale netting, garden & nursery support products



Air Filtration

Recyclable and incinerable support layer for cabin air filters & high efficiency HVAC systems



Automotive Filtration

Extruded netting, tubes & cores that provide support in demanding automotive liquid filters



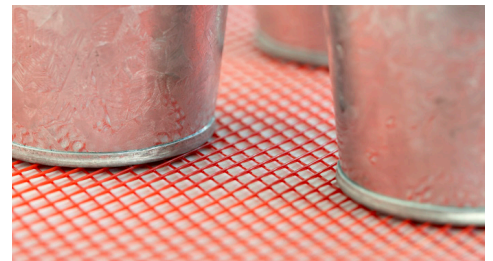
Building & Construction

Netting solutions for infrastructure, construction, safety/weather fence & building materials



Energy - Oil, Gas & Wind

Flow media for resin infusion in turbine blade production, baghouse filters, pipeline protection, hydraulic oil, oil boom netting & wind energy



Liners for Shipping, Display & Storage

Case and shelf liners, cushioned liners, freezer liners, standard grip liners, air grip liners & product overwraps



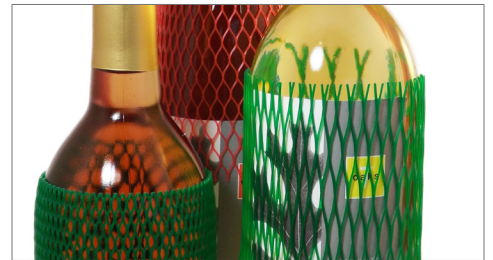
Marine

Flow media for resin infusion in composite production, extruded netting provides separation, channeling & flow control in hull production



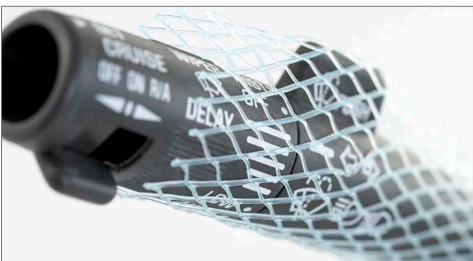
Medical

Extruded netting provides a flexible support layer in hospital masks, wound care & CPAP filters



Packaging

Ideal solution for packing, storing and shipping food, beverage, candy, toys, crafts, decor, bulk items, equipment & electronics



Parts Protection

Protective sleeves for part separation, furniture and bottle protection, marination bags, poultry & bulk packaging



Process Filtration

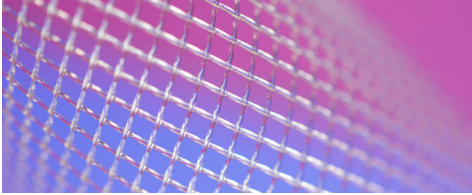
A wide range of filtration pleat support and outer sleeve options that withstand high temperatures & are compatible with many fluids



Reverse Osmosis

Membrane support feed spacers that offer improved pressure drop & flux within reverse osmosis elements

Naltex Diamond Netting



Features	Benefits
Limitless customization	Partner with us to develop a custom solution for your unique process
High strength	Light-weight protective netting capable of supporting heavy products
UV stable	Will not corrode in intense sunlight or saltwater environments
Does not shed, fray or unravel	Extruded material that will not shed, fray or unravel

Naltex Diamond Netting

- Industry leading diamond netting technology
- Improved process of extruding through counter-rotating die heads
- New resins, varied strand count and cross sections
- Full range of strand angles, offering customers different looks, feels, strengths
- Added value for niche applications with additives like UV stabilizers, antioxidants, flame retardants, antimicrobials, color and slip agents

Strand Geometry Options:

- **Symmetrical:** both sets of strands are at an angle to the machine direction
- **Asymmetrical:** strands are at an angle to the machine direction but are different in number and size
- **Non-symmetrical:** one set of strands runs in the machine direction while the other set runs at a customer angle.

Naltex Extruded Cage & Part Protection Netting



Features	Benefits
Rust proof	Extruded solution resistant to damage caused by corrosion
Incinerable	Reduces costs associated with disposal of traditional wire support
Chemically inert	Available in a variety of different resins compatible with aggressive chemicals & high temperatures
Wide range of sizes & colors	Cage from 1/4" - 24" (6.3 to 610 mm) in diameter and variety of colors
Stretch & Recovery	Resins can be modified to meet any product & stretch profile

Naltex Extruded Cages & Cores

- Ideal for support, containment and separation
- Provide strength and rigidity to protect delicate media
- Manufactured following a similar process as our extruded netting, with the exception of using a reciprocating die rather than a counter-rotating die
- Compatible with other materials and tailored to specific requirements

Naltex Extruded Sleeves for Parts Protection

- Variety of stretch and recovery characteristics
- Protects straight shafts or cylinders and more unusual shapes
- Supplied in cut lengths or can be heat-sealed at one end to form protective mesh bags
- Available in five unique styles that provide different levels of protection
- Range of color-coded sizes to fit a variety of diameters

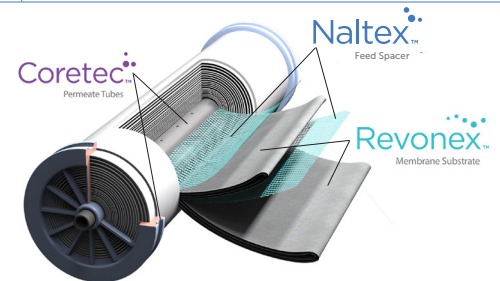


Naltex Feed Spacers

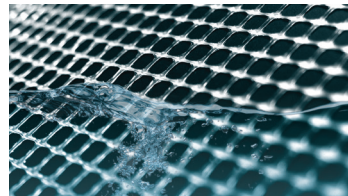
- Support and protect thin film composite (TFC) membranes in Reverse Osmosis (RO) spiral wound element filters
- Improves performance through optimized channeling that enhances fluid flow and reduces pressure
- Customizable strand alignment achieves the turbulence needed to protect and maintain system membranes
- Used in nearly all TFC membrane filtration applications, ranging from HRO to municipal water and industrial process filtration
- Full line of custom-designed feed spacers with varying geometries, specialty resins and optimal flow characteristics

Features	Benefits
Customizable web geometry	Precise flow control & excellent separation
Uniform web	Ensures membrane quality via consistent channeling & flow
Unique PP/PE blend	Creates soft edges that protect membranes from damage
Premium separation	Customization options provide full control of shearing

SWM Products for RO Spiral Wound Element Filters



Naltex Flow Media

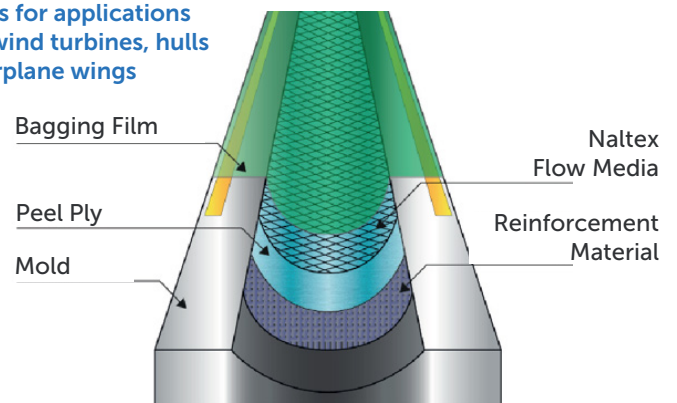


Naltex Flow Media

- Specially engineered to retain up to 15% less resin* than leading competitor (see test results on page 6)
- Smoothly conforms to the mold surface and facilitating the flow of resin infusion
- Tight, low profile, crisscross pattern of the media provides the necessary separation and channeling required to distribute a controlled, predictable flow of resin
- High performance, efficient with little waste
- Creates significant raw material cost savings for composite manufacturers
- Flexible edge that is safe for use with sensitive vacuum bags that are prone to abrasion and puncture
- SWM tools (lab trials, 3D printing, third-party testing, etc.) offer an abundance of infusion and flow media data under various conditions

Features	Benefits
Optimized edge geometry	Total cost savings by retaining up to 15% less resin* during layup
Flexible edges	Protect sensitive vacuum bags & peel ply media from tearing
Internally vacuum tested	Media that is specially manufactured for VARTM processes
Product customization	Modify any media to suite your unique process requirements

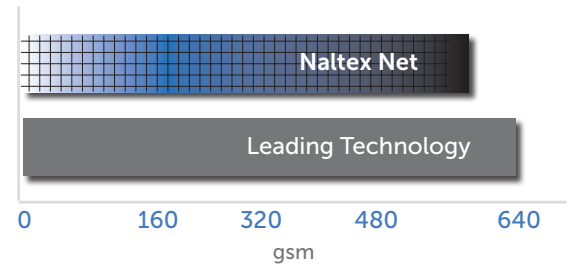
Resin infusion process layers for applications like wind turbines, hulls or airplane wings



Retained Resin

After a part is fully infused and cured using the resin infusion process, composite manufacturers remove and discard the bag, infusion flow media, and peel ply materials. The infusion flow media, depending on its configuration, can retain resin in between its spaces, an outcome identified as retained resin. Thus, any retained resin on the flow media can increase costs to the overall manufacturing.

15%
Less Resin Retainment with Naltex



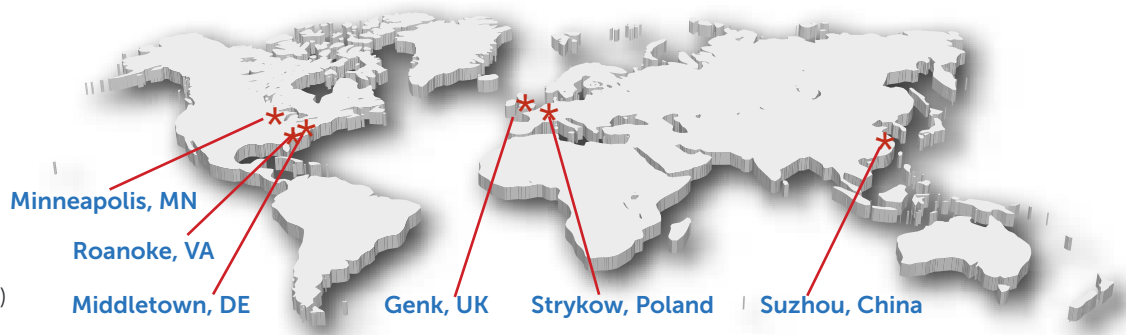
***Total cost savings by retaining up to 15% less resin during layup using Naltex X04215-006 flow media.**

Our Facilities



SWM locations shown
Genk UK (top) and
Middletown, DE, USA (bottom)

SWM is focused on advancing advanced materials and technologies in our ISO 9001, ISO 14001, ISO 50001 and OHSAS 18001 certified facilities. Our diverse product lines are recognized worldwide for their superior performance in a variety of applications. For more than 70 years, SWM has served its customers through a wide global manufacturing network with diverse processing capabilities developing solutions tailored to meet our customers unique requirements.



SWM INTL
100 North Point Center East
Suite 600
Alpharetta, GA 30022
USA

swmintl.com
ams@swmintl.com

AMSNAL_061621

About SWM

SWM is a leading global performance materials company. We use natural fibers, resins, and polymers to provide essential solutions that enhance product performance and help our customers win in a variety of industries and applications. For further information, please visit our web site at www.swmintl.com.

Copyright © Schweitzer-Mauduit International, Inc. (2021). All Rights Reserved. SWM™ and NALTEX™, are trademarks of Schweitzer-Mauduit International, Inc. ("SWM") or an affiliated company of SWM.



All statements, product characteristics, and performance data contained herein are believed to be reliable based on observation and testing, but no representations, guarantees, or warranties of any kind are made as to accuracy, suitability for particular applications, or the results to be obtained. Nothing contained herein is to be considered to be permission or a recommendation to use any proprietary process or technology without permission of the owner. No warranty of any kind, expressed or implied, is made or intended.